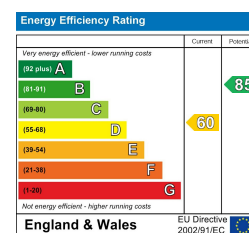
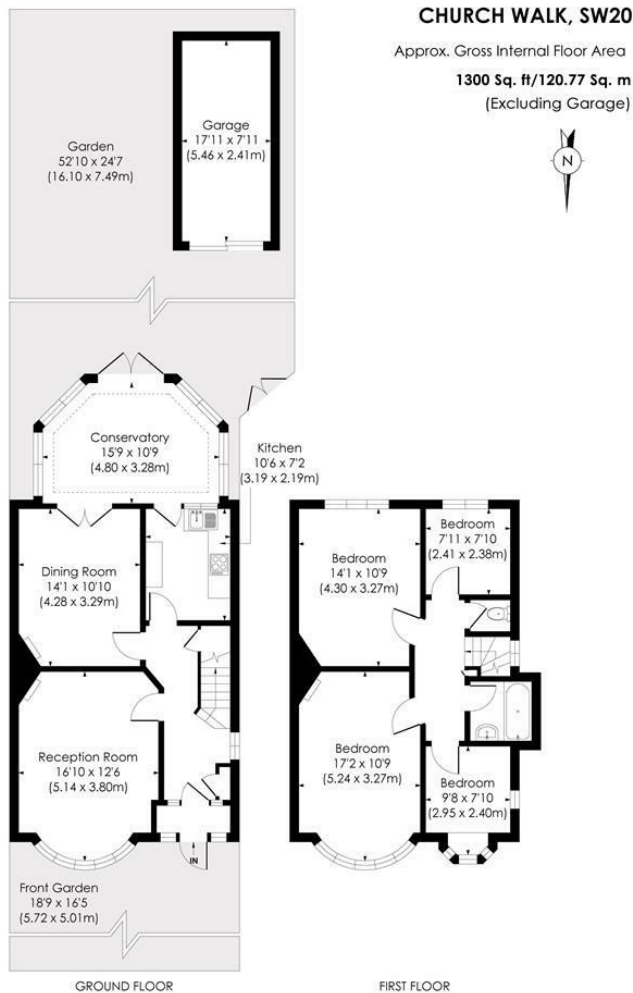


## Church Walk Raynes Park, SW20 9DL

£750,000 Freehold



**Requiring Cosmetic Updating - This spacious 1,300 sqft FOUR BEDROOM Semi-Detached, 1930s Blay house has a superb 52ft south facing rear garden with side access and a separate detached garage. Perfectly located for Raynes Park High Street and Station (0.3 Miles) and close to a host of well regarded schools. The property does require full renovation throughout but offers an incoming purchaser an excellent option to extend (s.t.p.p) and finish to their own desired tastes. No Onward Chain.**



- Four Bedroom, Semi-Detached Blay House
- 1,300 sqft with Conservatory Extension
- Requiring Cosmetic Renovation Throughout
- 0.3 Miles to Raynes Park Station and High Street
- 52ft South Facing Garden with Side Access
- Excellent Potential To Extend and Finish S.T.P.P
- Detached Garage to Rear
- No Onward Chain
- EPC - D
- Council Tax Band - F

**For Free Mortgage Quote and Best Mortgage Rates, call Ellisons Mortgage Advisor on 0208 944 9595**



Although these particulars are believed to be correct, their accuracy is not guaranteed and they do not form part of any contract.

**Celebrating 30 years of successful Sales and Lettings in Merton**

